



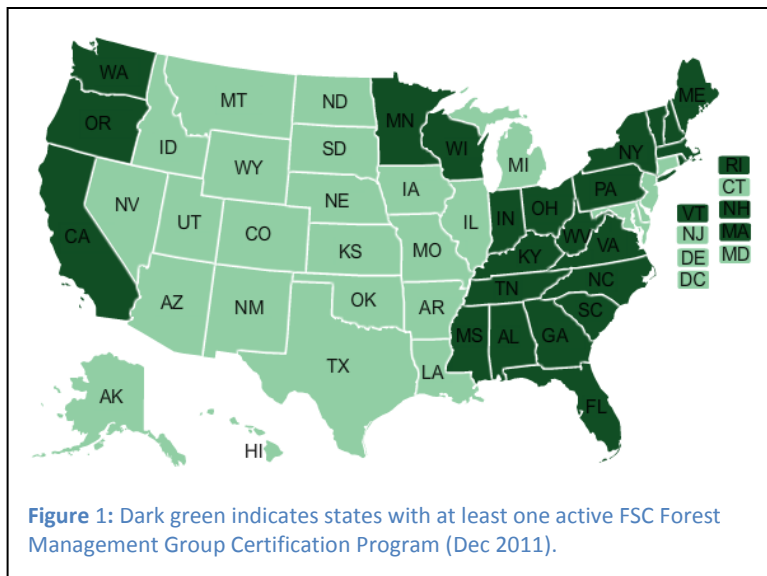
How to Get FSC Certification for Small-Medium Forests

As a small or medium-sized private forest owner, you might wonder how your woodland can become Forest Stewardship Council (FSC) certified. FSC certification opens doors to leading forest products markets and other benefits you might like to participate in.

Being “FSC Certified” means that an independent reviewer has looked at how your forestland is managed and verified that your practices generally measure up to FSC’s yard stick. In all, there are nearly 200 FSC indicators that reviewers consider in a full audit, but the whole set won’t necessarily apply to smaller private parcels. There is, however, effort involved in understanding the standard, getting a forestry plan, possibly adjusting management for FSC compliance, keeping and organizing records, hiring an accredited auditor, completing annual evaluations, etc.

Most individual family forest owners have no idea where to begin. Even if landowners have a forest management plan they’ve been following for years, they aren’t sure about how to add FSC credit for the good work they are doing.

While it is possible to get an independent FSC forest management certificate, usually only large forest owners take that route. Fortunately, FSC allows for group certification programs where group managers can address the details of certification. Groups can keep the entire process relatively simple and clear for individual landowners. Group certification also makes FSC certification affordable since auditors may need to visit only a small sample of members’ properties, audit and administrative costs can be shared, and often group managers are able to secure service agreements, grants and contributions that cover a significant portion of related group expenses.



The FSC group forest management standard is very flexible regarding what sort of organization can set up and administer a group certification program. An FSC group might be operated by a single consulting forester, a large agency with many foresters, a primary or secondary forest products company, a non-profit conservation organization, any level of government, and others. About the only requirements are that group entities must be able to effectively manage the group and there must be a single person designated as responsible for interaction with the certification bodies. There are also no limits on how

much woodland members own, with some groups setting up categories for both “small” (typically, anything less than 2,470 acres) and large ownerships.

A variety of FSC groups are springing up around the United States. The map in Figure 1 shows states where at least one FSC group is operating, and Table 1 at the end of this factsheet provides contact information for groups. In some instances, the group might operate statewide or be limited to a geographic region such as a county or a woodshed that supplies a particular mill. Some FSC groups are associated with other forestry incentive programs, such as state property tax reduction programs or federal Forest Stewardship Plans and cost-sharing programs. FSC allows landowners to be certified under multiple standards, and so adding FSC to a complementary certification scheme is also an option. Rules for how a group operates and who is eligible for membership are entirely up to the group. An example of a common, basic group structure is shown in Figure 2.

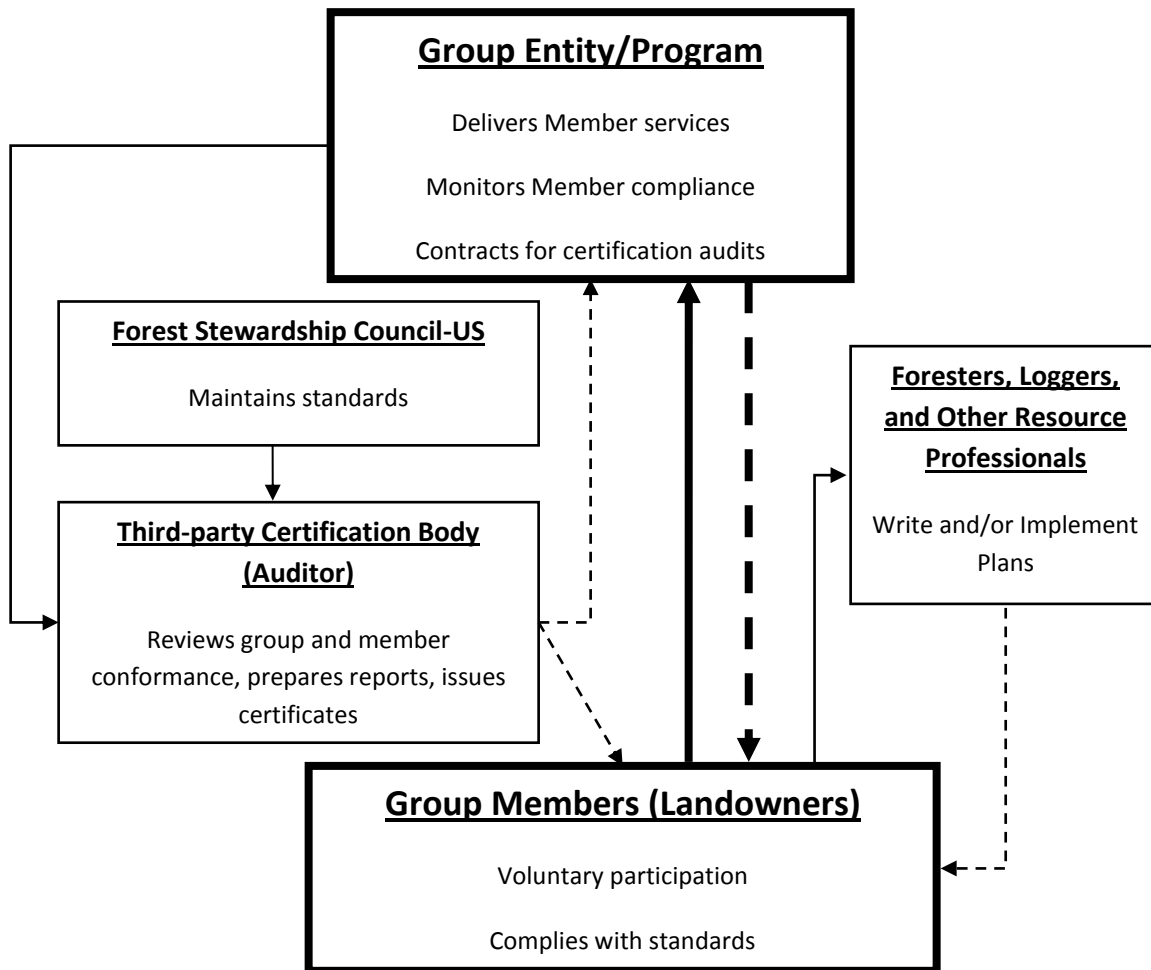


Figure 2: Example of a common FSC Forest Management Group setup. Solid lines indicate contractual relationships, dotted lines indicate services provided. Heavy borders denote primary parties.

Groups might require a fee to join and an annual fee to maintain membership. Fees set by independent private groups range from less than \$50 to a few hundred dollars to join, but the expense may fall as more members connect and share costs. Groups operated by governmental agencies are often free to participate in due to tax support for the economic and environmental benefits provided by private lands under responsible management. There are also industry sponsored groups with no membership fees, but a forest products company might request the “right of first refusal” on timber harvests in return for their forest management and certification services.

If there are no FSC groups in an area to join, landowners are encouraged to speak to their consulting forester, state forestry agency, local woodland owner associations, industry managers and other leaders. They possibly will set up an FSC group program in response to demand, especially when forest products companies join in the call. FSC certification can provide manufacturers a competitive edge in global markets, and so the prospect of strengthening business and providing jobs can be a powerful incentive for group formation. FSC-US can provide information and connections to technical assistance to show potential group sponsors how to set up a group and bring it up to an efficient scale.

While a Group Manager can take care of many of the details related to FSC certification, landowners who want to be Group Members have responsibilities, too. Examples include:

1. Applying for Group Membership
2. Obtaining and following a forest management plan that is consistent with group policies, including FSC indicators and FSC chain of custody requirements
3. Contacting the Group Manager when planning a timber harvest, and notifying the Group Manager when the timber harvest begins
4. Playing a role in monitoring the forest for change (such as invasive species, forest insects or diseases, wildlife populations, tree seedling survival, etc.)
5. Allowing access for group internal audits and FSC forest certification field audits
6. Keeping forest products harvested from Family Forests Group land separate from products harvested from non-Group land during commercial harvest operations
7. Considering appropriate liability insurance and safety requirements in timber sales and other contracts
8. Ensuring that no FSC banned pesticides are used on certified parcels
9. Maintaining property boundaries and ensuring that harvest boundaries are adequately designated on the ground or controlled with GPS-enabled harvest systems
10. Taking precautions (such as providing gates or appropriate signage if needed) to protect property from illegal use
11. Complying with laws and governmental regulations
12. Honoring legally substantiated use rights held by others
13. Keeping records of management activities, harvest of timber and commercial non-timber forest products, pesticide applications
14. Reporting management or change in ownership information to the Group Manager

Please visit <http://www.us.fsc.org/> for more information including access to the full FSC-US Standard and additional factsheets.



Table 1: Active FSC-US Forest Management Groups (Dec 2011)

Additional contact details including telephone numbers, addresses and websites are available at info.fsc.org

Certificate Code	Organization Name	State	Enrolled Parcels	Acres in Group	Primary Contact	Email or Website
SW-FM/COC-002337	Aitkin County Soil and Water Conservation District	MN	20	225,239	Mark Jacobs	mjacobs@co.aitkin.mn.us
SW-FM/COC-005397	Alabama Treasure Forest Association	AL	7	6,074	James Malone	atfa@atfa.net
SCS-FM/COC-00054G	Big Creek Resource Managers	CA	7	7,290	Janet Webb	janetw@big-creek.com
SW-FM/COC-000009	Blencowe and Associates	CA	24	13,267	Craig Blencowe	cblen@comcast.net
SCS-FM/COC-00110G	Collins Pine Company (Group)	CA	1	1,774	Lee Fledderjohann	lfledderjohann@collinsco.com
SW-FM/COC-000091	Columbia Forest Products - North American Resource Pool	KY NC OH OR TN VA WV	41	35,000	Richard Taylor	rtaylor@columbiaforestproducts.com
SCS-FM/COC-00115G	Conservation Forestry, LLC	TN	1	20,099	Kent Gilges	kent.gilges@conservationforestry.net
SW-FM/COC-001674	Dwight Lewis Lumber Company, Inc.	PA	45	14,819	Melvin Lewis	http://www.lewislp.com/contact.asp
SCS-FM/COC-00117G	Ecotrust Forest Management Inc.	OR	4	12,375	Bettina von Hagen	bettina@ecotrustforests.com
SW-FM/COC-000126	Edward S. Kocjancic, Incorporated	PA	6	11,471	Edward Kocjancic	eskinc@verizon.net
SW-FM/COC-000253	Finch Paper LLC	NY	4	91,350	Roger Dziengeleski	rdziengeleski@finchpaper.com
SW-FM/COC-004073	ForesTech Consulting, Inc., dba F4 Tech	FL	1	120	Mark Milligan	mmilligan@landmarksystems.com
SW-FM/COC-000216	Fountains Forestry Inc.	ME NH NY VA VT WV	29	108,226	James Walters	james.walters@fountainsamerica.com
SW-FM/COC-000064	Hickman Timber Management Co.	PA	18	7,747	Dennis Hickman	dhickman@hickmanwoods.com
SCS-FM/COC-00123N	Indiana DNR Division of Forestry	IN	10,544	528,351	John Seifert	jseifert@dnr.in.gov
SW-FM/COC-000183	Integrated Forest Management, Inc.	ME	4	1,705	Mark Rabon	mrabon@ifmgt.com
SW-FM/COC-000072	Mark S. Andre, RPF	CA	10	5,829	Mark Andre	eservices@cityofarcata.org

SW-FM/COC-004783	Massachusetts Department of Conservation and Recreation	MA	92	14,727	Douglas Hutcheson	douglas.hutcheson@state.ma.us
SCS-FM/COC-00001G	Mendocino Redwood Resource Manager Certification Program (MRRMCP)	CA	5	13,630	Mike Jani	mikejani@mendoco.com
SW-FM/COC-001054	Michael Howell Forestry Consultants	CA	6	5,896	Mike Howell	jhunter@pacific.net
SCS-FM/COC-00049G	Mid-Maine Forestry	ME	88	8,294	Mitch Kihn	mid-maine_forestry@juno.com
SW-FM/COC-000223	New England Forestry Consultants, Inc.	NH VT	4	5,392	Shaun Lagueux	slagueux@metrocast.net
SA-FM/COC-001394	Northwest Natural Resource Group	OR WA	87	20,530	Kirk Hanson	kirk@nnerg.org
SW-FM/COC-004467	Northwoods Forest Consultants, LLC	NY	5	2,816	Herb Boyce	herb.nfc@frontiernet.net
SCS-FM/COC-00033G	Phil Nemir	CA	15	5,548	Phil Nemir	philnemir@hotmail.com
SCS-FM/COC-00103G	Prentiss & Carlisle Management Company, Inc.	ME	55	748,937	Bill Miller	whmiller@prentissandcarlisle.com
SW-FM/COC-000201	Protect the Adirondacks!	NY	30	10,794	Sid Haring	http://www.protectadks.org/contact-us/
SW-FM/COC-002179	Redstart Forestry, Inc.	ME NH NY VA VT	17	1,871	Ben Machin	ben@redstartconsulting.com
BV-FM/COC-973491	SAPPI	ME NH	10	5,029	Charles Hall	charles.hall@sappi.com
SW-FM/COC-003075	Southern Forests Network	MS NC SC VA	13	2,137	Alyx Perry	alyx@southernforestsnetwork.org
SW-FM/COC-003626	State of Wisconsin Department of Natural Resources	WI	42,892	2,239,207	Kathryn Nelson	kathryn.nelson@wisconsin.gov
SW-FM/COC-000238	The Nature Conservancy (Working Woodlands Network)	PA	7	5,000 (est)	Fran Raymond Price	fprice@tnc.org
SW-FM/COC-001881	The Trust to Conserve Northeast Forestland	ME RI VT	8	10,576	Beth Ollivier	eollivier@tcnef.org
SCS-FM/COC-00062G	Trout Mountain Forestry	OR	69	28,724	Barry Sims	barry@troutmountain.com
SW-FM/COC-003288	Wagner Forest Management, LTD	ME	2	847,611	Gordon Gamble	gsgamble@wagnerforest.com
BV-FM/COC-006695	White Wood Forest Management Group	SC GA	25	11,357	Buck Howell	buck@whitewoodinc.com